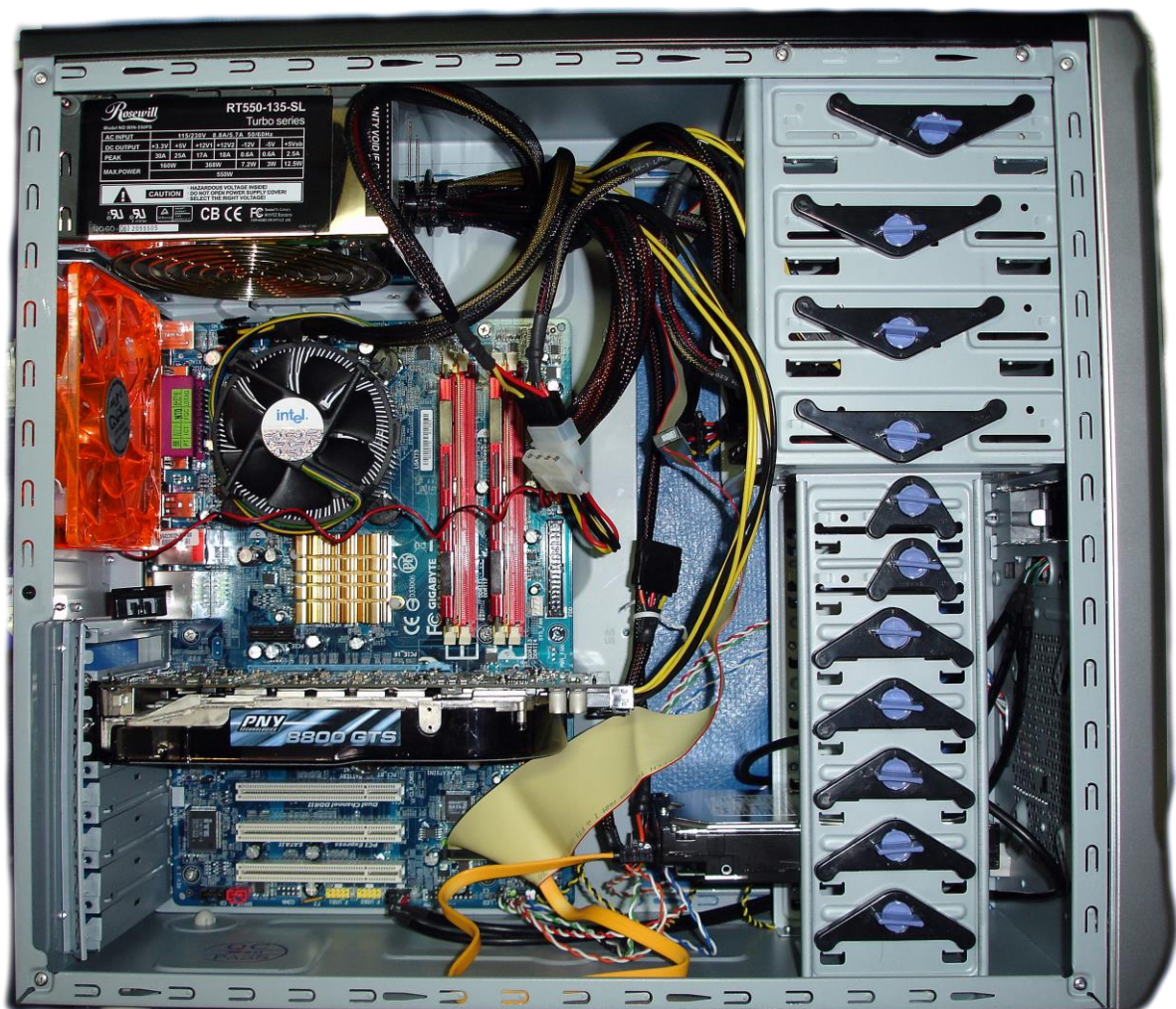


What is a Computer?

In this video we took a look inside a computer and went over the key components you'll see if you open one. Here is a picture of a regular desktop PC, much like one you would see in a school classroom. Have a look inside, can you out what each part is? Do not open a real computer without adult supervision!



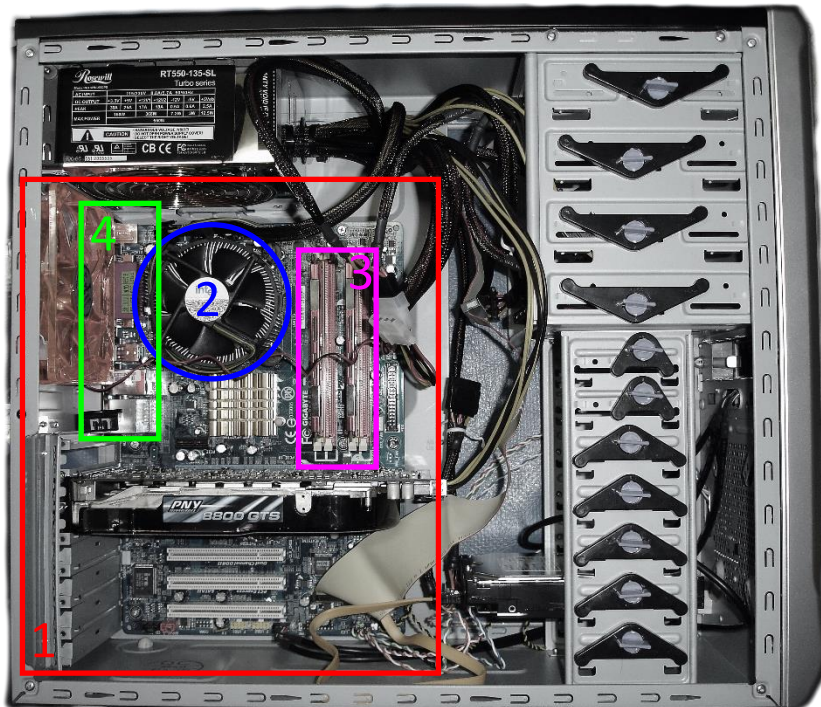
Here are some parts you can look for:

1. The **motherboard** that connects everything together
2. The **processor (CPU)** that performs all the arithmetic and logic
3. The **memory (RAM)** that holds our problems and their results
4. The **plugs and sockets** needed to connect the PC (these are hard to spot!)

Here are some hints:

- The motherboard is very big, you can't miss it!
- The CPU gets very hot, and it needs its own fan to cool it down. You'll see this fan on the motherboard facing you.
- The memory is very long and thin, and near the CPU
- The plugs and sockets are at the back of the PC (the left). They're next to a large orange fan used to cool the inside of the case

Answers:



Some extra things that we didn't see in the video that the children might like to find:

5. **The hard disk** – this is what stores all of our big information, and everything is kept when the computer is off. It is near the bottom plugged into a bright orange cable.
6. **The power supply** – this takes the electricity from a wall socket and makes it safe for the tiny circuits on a computer. It is at the top, with many black and yellow power cables coming out of it.
7. **The graphics card** – This allows the computer to play games more quickly, and is usually used to connect to a screen. This is the large black object connected to the middle of the motherboard, below the processor and memory.

Here is an entirely different PC, but you'll see it's very familiar as many PCs are almost identical in structure. The power supply on this PC is at the bottom rather than the top, everything else is in the same place. Can you find the same components a second time?

